

"

"

"

"

2019 6 30

545

2018 6

H K A A (" HK AA")

BJCE	
	B J C E (H K) C ., L .
	B J C E C .,L
	2018.6.28
	3

	17.2
	2021.6.28

	17.2

3 17.2

165.5

13

108

20

73

165.5

2020

270



4.2

,

13

1.8

22 /

3,100

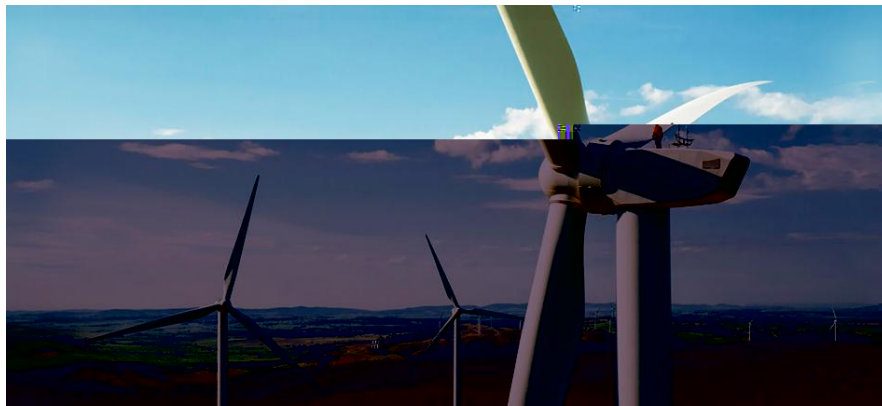
A

E

A

A E A

990



31

108

,

4

2019 8

2020